

BAYLAN

WATER METERS

ES-1P

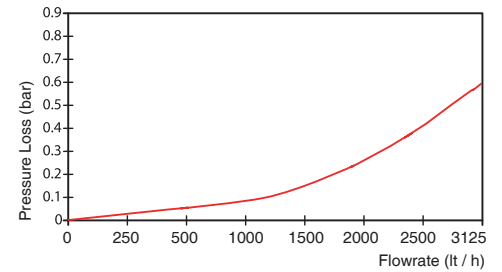
Multi jet Dry type Water Meter



GENERAL

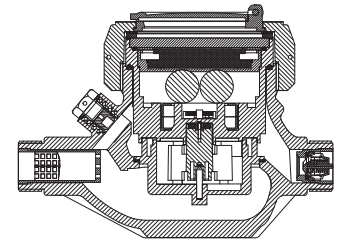
- MID Certified
- Multi jet working principle assures a long service time
- Warning features such as reverse flow, stray at plumbing and tampering
- Detecting environment temperature feature
- Pulse output and AMR reading. (Optional)
- Support wired or Wireless M-Bus communication (EN13757). (Optional)
- Wide angle digital screen for easy reading
- IP68 protected electronic circuit and mechanical meter
- Protection against magnetic effect
- Battery life time 10 years. (Optional 15 years)
- Suitable for potable water
- Low pressure loss, high sensitivity at initial flow
- Special glass with high resistance to pressure and impact
- Plastic body with high resistance to pressure and impacts
- 360° rotating lid
- 3 years of warranty • Non return valve
- Suitable for cold water up to 50°C
- Service and spare parts available for 10 years

PRESSURE LOSS CURVE

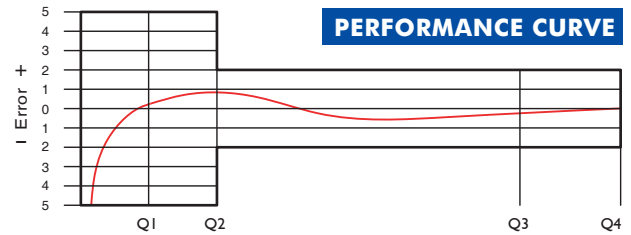


PERFORMANCE DATA

Overload Flowrate	Q4	m ³ /h	3,125						
Permanent Flowrate	Q3	m ³ /h	2,5						
Transitional Flowrate	Q2	m ³ /h	0,01	0,0127	0,016	0,020	0,025	0,032	0,040
Minimum Flowrate	Q1	m ³ /h	0,00625	0,008	0,01	0,0125	0,0156	0,02	0,025
Q3/Q1 (MI-001 OIML R49)	-		400	315	250	200	160	125	100
Maximum Registration Capacity		m ³	999999,99999						
Mounting on the network			Horizontal						
Initial Flow	Qi	l/h	6						
Maximum Working Pressure		bar	16						
Maximum Working Temperature		°C	50						
Pressure Loss		bar	0,6						
Smallest Reading Resolution		m ³	0,00001						
Class			Class 1 / Class 2						



PERFORMANCE CURVE



DIMENSIONS

Nominal diameter	DN	15	mm
Connecting diameter	D	G 3/4	B
Total overall meter height	H	122	mm
Axis height	h	37	mm
Width	B	101	mm
Length	L	165	mm
Length with connections	LB	245	mm
Unit weight		0,78	kg
Package Weight (without connect)		8,74	kg
Package Weight (with connect)		10,34	kg
Quantity per package		10	pcs.
Package dimensions		27x48x20	cm

