

BAYLAN

WATER METERS

ES-6

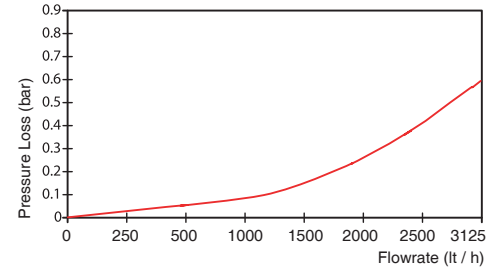
Multi jet Dry type Water Meter



GENERAL

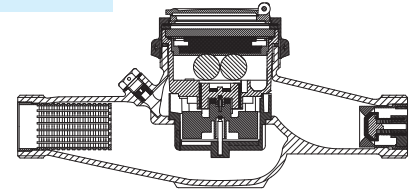
- MID Certified
- Multi jet working principle assures a long service time
- Warning features such as reverse flow, stray at plumbing and tampering
- Detecting environment temperature feature
- Pulse output and AMR reading. (Optional)
- Support wired or Wireless M-Bus communication (EN13757). (Optional)
- Wide angle digital screen for easy reading
- IP68 protected electronic circuit and mechanical meter
- Protection against magnetic effect
- Battery life time 10 years. (Optional 15 years)
- Suitable for potable water
- Low pressure loss, high sensitivity at initial flow
- Special glass with high resistance to pressure and impact
- Electrostatic painted body made of corrosion resistant brass
- 360° rotating lid
- 3 years of warranty • Non return valve
- Suitable for cold water up to 50°C
- Service and spare parts available for 10 years

PRESSURE LOSS CURVE

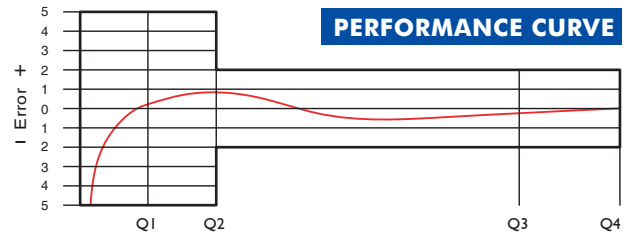


PERFORMANCE DATA

Overload Flowrate	Q4	m ³ /h	7,875						
Permanent Flowrate	Q3	m ³ /h	6,3						
Transitional Flowrate	Q2	m ³ /h	0,0252	0,032	0,04032	0,0504	0,063	0,08064	0,1008
Minimum Flowrate	Q1	m ³ /h	0,01575	0,02	0,0252	0,0315	0,0393	0,0504	0,063
Q3/Q1 (MI-001 OIML R49)	-		400	315	250	200	160	125	100
Maximum Registration Capacity	m ³	999999,99999							
Mounting on the network	-	Horizontal							
Initial Flow	Qi	l/h	6						
Maximum Working Pressure	bar	16							
Maximum Working Temperature	°C	50							
Pressure Loss	bar	0,6							
Smallest Reading Resolution	m ³	0,00001							
Class	-	Class 1 / Class 2							



PERFORMANCE CURVE



DIMENSIONS

Nominal diameter	DN	25	mm
Connecting diameter	D	G1 1/4	B
Total overall meter height	H	124	mm
Axis height	h	40	mm
Width	B	92	mm
Length	L	260	mm
Length with connections	LB	380	mm
Unit weight		1.84	kg
Package Weight (without connect)		19.49	kg
Package Weight (with connect)		23.89	kg
Quantity per package		10	pcs.
Package dimensions		26x52x30 cm	

