

BAYLAN

WATER METERS

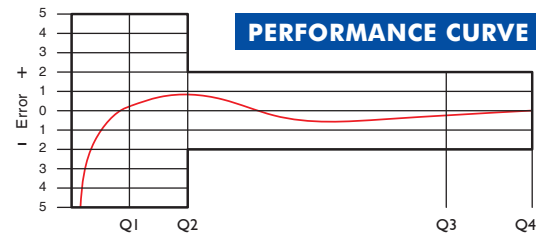
KK-13

Single jet Dry type Water Meter



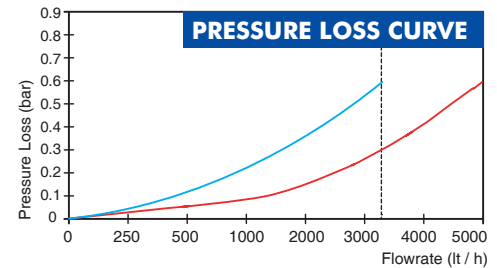
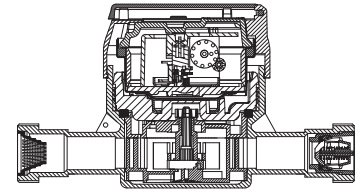
GENERAL

- MID Certified
- Single jet design assures very high sensitivity even at low flows
- 359° rotating dial • Suitable for potable water
- Vacuumed mechanism
- With stainless steel register cup
- Available for optical reading
- AMR reading features are optional
- Electrostatic painted body made of corrosion resistant brass
- Protection against external magnetic fields
- 8 roller register
- Available for optical reading
- 3 years of warranty • Almost no maintenance
- Suitable for cold water up to 50°C
- Service and spare parts available for 10 years



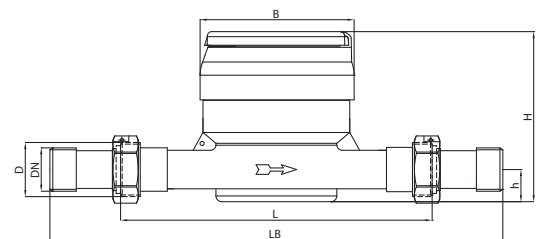
PERFORMANCE DATA

Nominal diameter	DN	mm	15	20				
Overload Flowrate	Q4	m ³ /h	3,125	3,125	5			
Permanent Flowrate	Q3	m ³ /h	2,5	2,5	4			
Transitional Flowrate	Q2	m ³ /h	0,025	0,050	0,025	0,050	0,0256	0,08
Minimum Flowrate	Q1	m ³ /h	0,0156	0,0312	0,0156	0,0312	0,016	0,05
Q3/Q1 (MI-001 OIML R49)	-		≤160	≤80	≤160	≤80	≤250	≤80
Mounting on the network	-		H	V	H	V	H	V
Length	L		110/115/165/170	110/115/190	190			
Maximum Registration Capacity		m ³	99999,999					
Initial Flow	Qi	l/h	4					
Maximum Working Pressure		bar	16					
Maximum Working Temperature		°C	50					
Pressure Loss		bar	0,63					
Smallest Reading Resolution		m ³ /h	0,00005					
Class			- Class 1/Class 2					
Quantity per package			- 10					



DIMENSIONS

Nominal diameter	DN	15	20	mm
Connecting diameter	D	G 3/4	G 1	B
Total overall meter height	H	106,5	106,5	mm
Axis height	h	20	20	mm
Length	L	110/115/165/170	110/115/190	mm
Width	B	95	95	mm
Length with connections	LB	190/195/245/250	190/195/270	mm
Unit weight		0,88	0,95	kg
Package Weight (without connect)		9,60	10,30	kg
Package Weight (with connect)		11,20	12,20	kg
Package dimensions		27x48x20	27x52x22	cm



"Due to continuous development of our products, we reserve the right to modify our product design or construction without prior notice."