

BAYLAN

WATER METERS

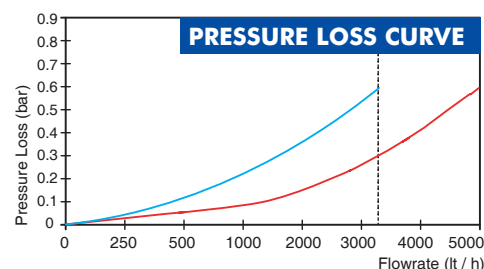
KK-14

Single jet Dry type Water Meter



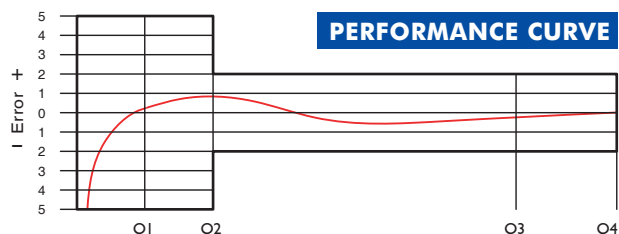
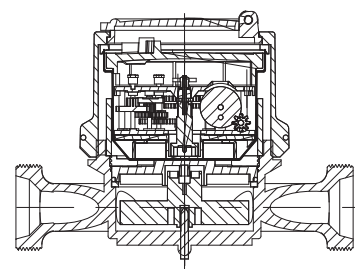
GENERAL

- MID Certified
- Single jet design assures very high sensitivity even at low flows
- With stainless steel register cup
- 360° rotating lid
- Suitable for potable water
- Available for optical reading
- Pulse output and AMR reading features are optional
- Electrostatic painted body made of corrosion resistant brass
- Protection against external magnetic fields
- Vacuumed mechanism
- Suitable for cold water up to 50°C
- Almost no maintenance
- 3 years of warranty
- Service and spare parts available for 10 years



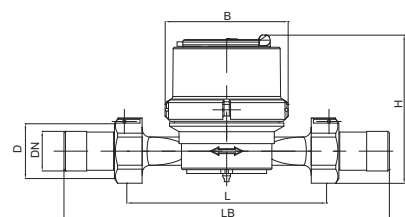
PERFORMANCE DATA

Nominal diameter	DN	mm	15 / 20		20	
Overload Flowrate	Q4	m ³ /h	3,125		5	
Permanent Flowrate	Q3	m ³ /h	2,5		4	
Transitional Flowrate	Q2	m ³ /h	0,020	0,050	0,032	0,08
Minimum Flowrate	Q1	m ³ /h	0,0125	0,0312	0,020	0,05
Q3/Q1 (MI-001 OIML R49)	-		≤200	≤80	≤200	≤80
Mounting on the network	-		H	V	H	V
Maximum Registration Capacity	m ³		9999 / 99999 / 99999,99 / 99999,999			
Initial Flow	Qi	l/h	5			
Maximum Working Pressure	bar		16			
Maximum Working Temperature	°C		50			
Pressure Loss	bar		0,63			
Smallest Reading Resolution	m ³ /h		0,00005			
Class	-		Class 1/Class 2			
Quantity per package	-		10			



DIMENSIONS

Nominal diameter	DN	15	15	20	20	mm				
Connecting diameter	D	G 3/4	G 3/4	G 1	G 1	B				
Total overall meter height	H	95	95	95	95	mm				
Axis height	h	17,5	17,5	17,5	17,5	mm				
Width	B	81	81	81	81	mm				
Length	L	110	115	130	145	mm				
Length with connections	LB	190	195	210	225	mm				
Unit weight		0,61	0,63	0,65	0,70	0,62	0,64	0,75	0,72	kg
Package Weight (without connections)		6,86	7,06	7,26	7,76	6,96	7,16	8,12	7,96	kg
Package Weight (with connections)		8,46	8,66	8,86	9,36	8,86	9,06	10,0	9,86	kg
Package dimensions		22x43x17	22x43x17	22x43x17	22x43x17	cm				



"Due to continuous development of our products, we reserve the right to modify our product design or construction without prior notice."