

BAYLAN

WATER METERS

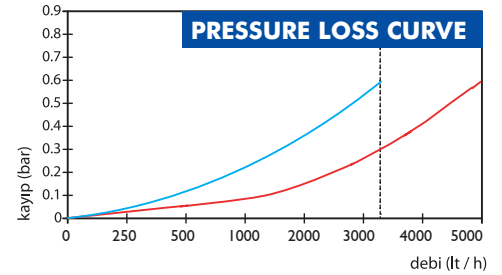
KK-29

Single jet Dry type Water Meter



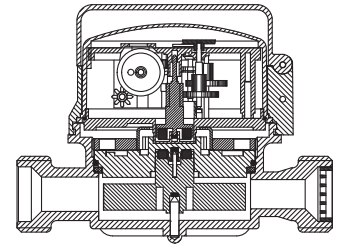
GENERAL

- MID Certified
- Single jet design assures very high sensitivity even at low flows
- 359° rotating dial
- Suitable for potable water
- Available for optical reading
- Pulse output and AMR reading features are optional
- Electrostatic painted body made of corrosion resistant brass
- Protection against external magnetic fields
- Vacuumed mechanism
- Suitable for cold water up to 50°C
- Almost no maintenance
- 3 years of warranty
- Service and spare parts available for 10 years



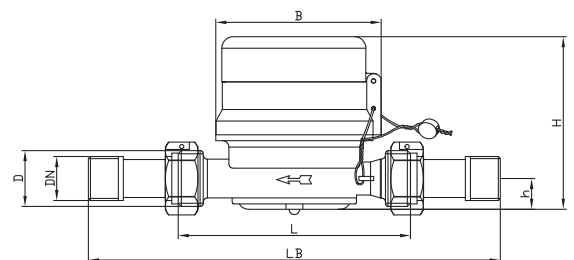
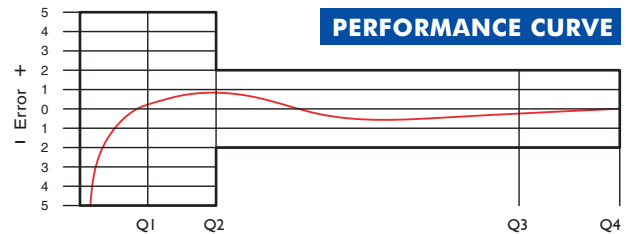
PERFORMANCE DATA

| | | | | | | |
|-------------------------------|-------------------|-------------------|------------------------------|--------|-------|------|
| Nominal diameter | DN | mm | 15 / 20 | 20 | | |
| Overload Flowrate | Q4 | m ³ /h | 3,125 | 5 | | |
| Permanent Flowrate | Q3 | m ³ /h | 2,5 | 4 | | |
| Transitional Flowrate | Q2 | m ³ /h | 0,025 | 0,0635 | 0,032 | 0,08 |
| Minimum Flowrate | Q1 | m ³ /h | 0,0156 | 0,0397 | 0,020 | 0,05 |
| Q3/Q1 (MI-001 OIML R49) | - | | ≤160 | ≤63 | ≤200 | ≤80 |
| Mounting on the network | - | | H | V | H | V |
| Maximum Registration Capacity | m ³ | | 99999 / 99999,99 / 99999,999 | | | |
| Initial Flow | Qi | l/h | 6 | | | |
| Maximum Working Pressure | bar | | 16 | | | |
| Maximum Working Temperature | °C | | 50 | | | |
| Pressure Loss | bar | | 0,63 | | | |
| Smallest Reading Resolution | m ³ /h | | 0,00005 | | | |
| Class | - | | Class 1/Class 2 | | | |
| Quantity per package | - | | 10 | | | |



DIMENSIONS

| | | | | |
|--------------------------------------|----|----------|----------|----|
| Nominal diameter | DN | 15 | 20 | mm |
| Connecting diameter | D | G 3/4 | G 1 | B |
| Total overall meter height | H | 82 | 82 | mm |
| Axis height | h | 14,5 | 17,5 | mm |
| Width | B | 78 | 78 | mm |
| Length | L | 110 | 130 | mm |
| Length with connections | LB | 190 | 210 | mm |
| Unit weight | | 0,45 | 0,50 | kg |
| Package Weight (without connections) | | 5,12 | 5,76 | kg |
| Package Weight (with connections) | | 6,72 | 7,66 | kg |
| Package dimensions | | 21x43x17 | 21x43x17 | cm |



"Due to continuous development of our products, we reserve the right to modify our product design or construction without prior notice."