

BAYLAN

WATER METERS

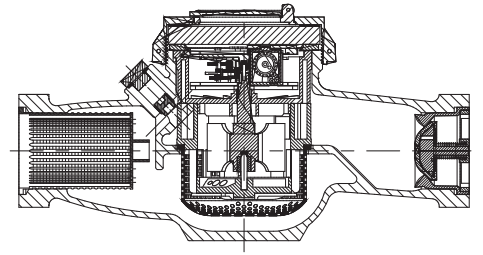
SD-10

Multi jet Semi-Dry type Water Meter



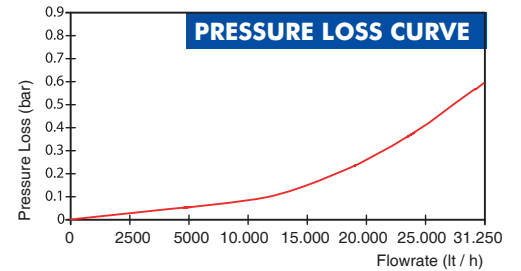
GENERAL

- MID Certified
- Multi jet working principle assures a long service time
- Low pressure loss, high sensitivity at initial flow
- Suitable for potable water
- Propylene glycol protected register
- Special glass with high resistance to pressure and impact
- Double filter • Non return valve
- Electrostatic painted body made of corrosion resistant brass
- Available for optical reading
- Pulse output and AMR reading features are optional
- 3 years of warranty • Almost no maintenance
- Suitable for cold water up to 50°C
- Service and spare parts available for 10 years

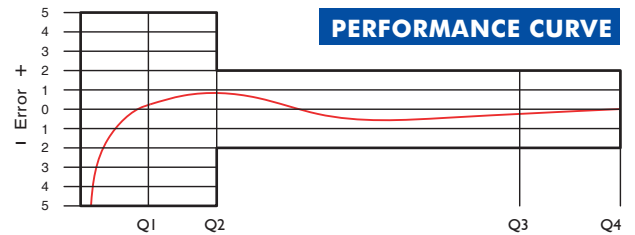


PERFORMANCE DATA

Overload Flowrate	Q4	m ³ /h	31,25
Permanent Flowrate	Q3	m ³ /h	25
Transitional Flowrate	Q2	m ³ /h	0,4
Minimum Flowrate	Q1	m ³ /h	0,25
Q3/Q1 (MI-001 OIML R49)	-		≤100
Mounting on the network	-		Horizontal
Maximum Registration Cap.	m ³		9999 / 99999 / 999999,99 / 99999,999
Initial Flow	Qi	l/h	30
Maximum Working Pressure	bar		16
Maximum Working Temp.	°C		50
Pressure Loss	bar		0,63
Smallest Reading Resolution	m ³ /h		0,00005
Class	-		Class 1 / Class 2



PERFORMANCE CURVE



DIMENSIONS

Nominal diameter	DN	50	mm
Connecting diameter	D	G2 1/2	B
Total overall meter height	H	157,4	mm
Axis height	h	59,8	mm
Length	L	300	mm
Width	B	122,2	mm
Length with connections	LB	429	mm
Unit weight		4,35	kg
Package Weight (without connect)		19,15	kg
Package Weight (with connect)		25,35	kg
Quantity per package		4	pcs
Package dimensions		34x37x36,5	cm

