

# BAYLAN

## WATER METERS

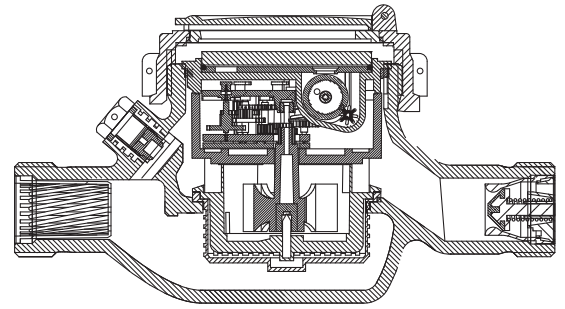
### SD-2P

## Multi jet Semi-Dry type Water Meter



#### GENERAL

- MID Certified
- Multi jet working principle assures a long service time
- Suitable for potable water
- Low pressure loss, high sensitivity at initial flow
- Propylene glycol protected register
- Special glass with high resistance to pressure and impact
- Plastic body with high resistance to pressure and impacts
- Available for optical reading
- Pulse output and AMR reading features are optional
- Double filter • Non return valve
- 3 years of warranty • Almost no maintenance
- Suitable for cold water up to 50°C
- Service and spare parts available for 10 years
- Brass or plastic end connection options



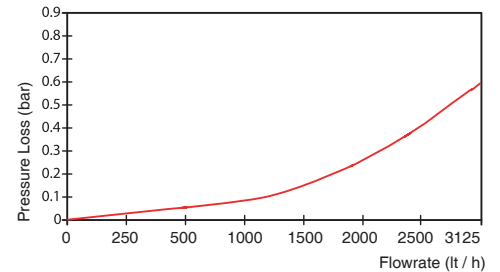
#### PERFORMANCE DATA

|                             |                   |                   |                                     |       |        |      |
|-----------------------------|-------------------|-------------------|-------------------------------------|-------|--------|------|
| Overload Flowrate           | Q4                | m <sup>3</sup> /h | 3,125                               | 5     | 3,125  | 5    |
| Permanent Flowrate          | Q3                | m <sup>3</sup> /h | 2,5                                 | 4     | 2,5    | 4    |
| Transitional Flowrate       | Q2                | m <sup>3</sup> /h | 0,020                               | 0,032 | 0,10   | 0,16 |
| Minimum Flowrate            | Q1                | m <sup>3</sup> /h | 0,0125                              | 0,020 | 0,0625 | 0,10 |
| Q3/Q1 (MI-001 OIML R49)     | -                 |                   | ≤200                                |       | 40     |      |
| Mounting on the network     | -                 |                   | H                                   |       | V      |      |
| Maximum Registration Cap.   | m <sup>3</sup>    |                   | 9999 / 99999 / 99999,99 / 99999,999 |       |        |      |
| Initial Flow                | Qi                | l/h               | 5                                   |       |        |      |
| Maximum Working Pressure    | bar               | 16                |                                     |       |        |      |
| Maximum Working Temp.       | °C                | 50                |                                     |       |        |      |
| Pressure Loss               | bar               | 0,63              |                                     |       |        |      |
| Smallest Reading Resolution | m <sup>3</sup> /h | 0,00005           |                                     |       |        |      |
| Class                       | -                 | Class 1 / Class 2 |                                     |       |        |      |

#### DIMENSIONS

|                                  |    |          |     |
|----------------------------------|----|----------|-----|
| Nominal diameter                 | DN | 20       | mm  |
| Connecting diameter              | D  | G 1      | B   |
| Total overall meter height       | H  | 117      | mm  |
| Axis height                      | h  | 37.5     | mm  |
| Length                           | L  | 190      | mm  |
| Width                            | B  | 101      | mm  |
| Length with connections          | LB | 270      | mm  |
| Unit weight                      |    | 0,79     | kg  |
| Package Weight (without connect) |    | 8,83     | kg  |
| Package Weight (with connect)    |    | 10,73    | kg  |
| Quantity per package             |    | 10       | pcs |
| Package dimensions               |    | 27x52x22 | cm  |

#### PRESSURE LOSS CURVE



#### PERFORMANCE CURVE

