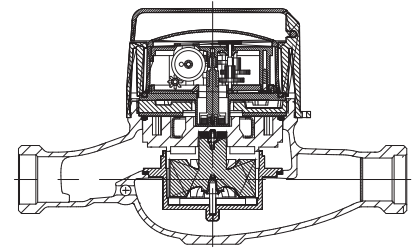


BAYLAN

WATER METERS

TK-1C

Multi jet Dry type Water Meter



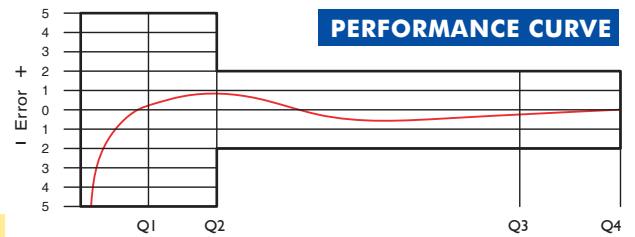
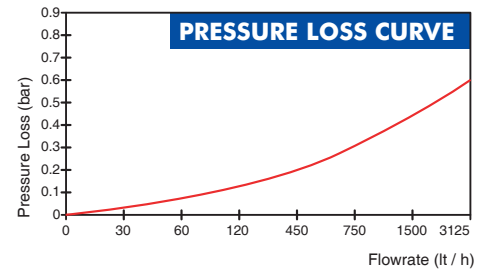
GENERAL

- MID Certified • Impeller chamber strainer (Optional)
- Multi jet working principle assures a long service time
- Suitable for potable water
- Low pressure loss, high sensitivity at initial flow
- Special glass with high resistance to pressure and impact
- Electrostatic painted body made of corrosion resistant brass
- Protection against external magnetic fields
- Available for optical reading • 359° rotating dial
- Pulse output and AMR reading features are optional
- 3 years of warranty • Non return valve
- Suitable for cold water up to 50°C
- Almost no maintenance • Vacuumed mechanism
- Service and spare parts available for 10 years



PERFORMANCE DATA

Nominal diameter	DN	15	20		
Overload Flowrate	Q4	m ³ /h	3,125	3,125	
Permanent Flowrate	Q3	m ³ /h	2,5	2,5	
Transitional Flowrate	Q2	m ³ /h	0,02	0,1	0,02
Minimum Flowrate	Q1	m ³ /h	0,0125	0,0625	0,0125
Q3/Q1 (MI-001 OIML R49)			≤200	≤40	≤200
Mounting on the network			H	V	H
Maximum Registration Capacity			9999 / 99999 / 99999,99 / 99999,999		
Initial Flowrate	Qi	l/h	5		
Maximum Working Pressure		bar	16		
Maximum Working Temperature		°C	50		
Pressure Loss		bar	0,63		
Smallest Reading Resolution		m ³	0,00005		
Class			Class 1 / Class 2		
Quantity per package			10		



DIMENSIONS

Nominal diameter	DN	15	20	mm
Connecting diameter	D	G 3/4	G 1	B
Total overall meter height	H	115	115	mm
Axis height	h	31,5	31,5	mm
Length	L	190	190	mm
Width	B	85	85	mm
Length with connections	LB	270	270	mm
Unit weight		1,03	1,09	kg
Package Weight (without connect)		11,06	11,84	kg
Package Weight (with connect)		12,66	13,74	kg
Package dimensions		25x46x22	25x46x22	cm

