

# BAYLAN

## WATER METERS

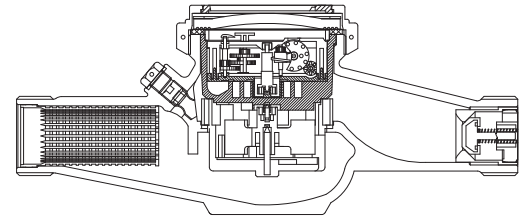
### TK-26

## Multi jet Dry type Water Meter



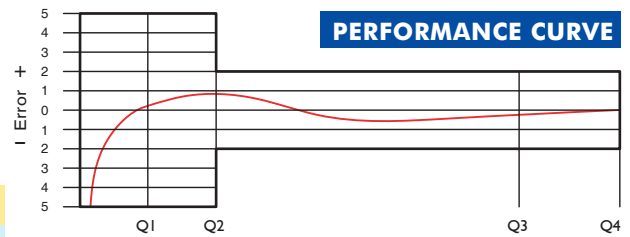
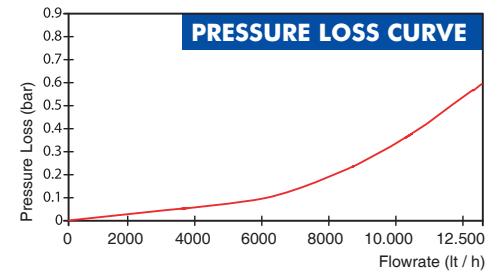
#### GENERAL

- MID Certified
- Multi jet working principle assures a long service time
- Suitable for potable water
- 360° rotating lid
- Low pressure loss, high sensitivity at initial flow
- Electrostatic painted body made of corrosion resistant brass
- Protection against external magnetic fields
- Available for optical reading • Non return valve
- Pulse output and AMR reading features are optional
- 3 years of warranty • Almost no maintenance
- Suitable for cold water up to 50°C
- Service and spare parts available for 10 years



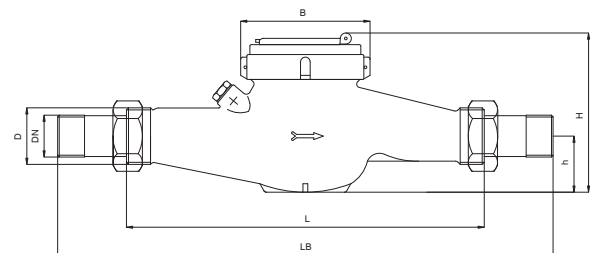
#### PERFORMANCE DATA

Overload Flowrate	Q4	m <sup>3</sup> /h	12,5
Permanent Flowrate	Q3	m <sup>3</sup> /h	10
Transitional Flowrate	Q2	m <sup>3</sup> /h	0,064
Minimum Flowrate	Q1	m <sup>3</sup> /h	0,04
Q3/Q1 (MI-001 OIML R49)			≤250
Mounting on the network			Horizontal
Maximum Registration Capacity			99999 / 99999,99 / 99999,999
Initial Flowrate	Qi	l/h	9
Maximum Working Pressure		bar	16
Maximum Working Temperature		°C	50
Pressure Loss		bar	0,63
Smallest Reading Resolution		m <sup>3</sup>	0,00005
Class			Class 1 / Class 2



#### DIMENSIONS

Nominal diameter	DN	25	32	mm
Connecting diameter	D	G1 1/4	G1 1/2	B
Total overall meter height	H	120,5	124	mm
Axis height	h	40,8	47	mm
Width	B	92	92	mm
Length	L	260	260	mm
Length with connections	LB	380	380	mm
Unit weight		2,21	2,24	kg
Package Weight (without connect)		23,34	23,39	kg
Package Weight (with connect)		27,84	30,19	kg
Quantity per package		10	10	pcs
Package dimensions		26x52x30	26x52x30	cm



"Due to continuous development of our products, we reserve the right to modify our product design or construction without prior notice."