

BAYLAN

WATER METERS

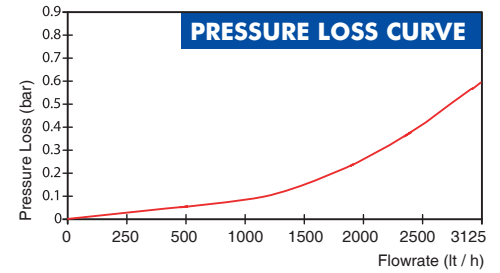
VK-10

Volumetric Water Meter



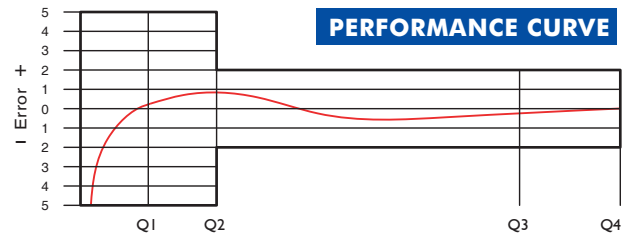
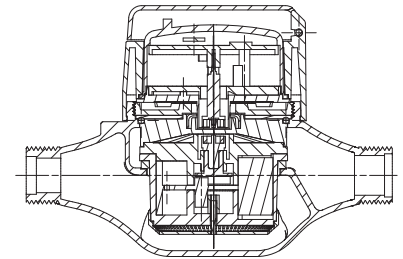
GENERAL

- MID Certified
- Volumetric principle assures very high sensitivity even at low flow
- Suitable for potable water
- Very good sensitivity in initial starting
- Special glass with high resistance to pressure and impact
- Electrostatic painted body made of corrosion resistant brass
- Protection against external magnetic fields
- Available for optical reading
- Pulse output and AMR reading features are optional
- 3 years of warranty • Non return valve
- Suitable for cold water up to 50°C
- Almost no maintenance • 359° rotating dial
- Service and spare parts available for 10 years



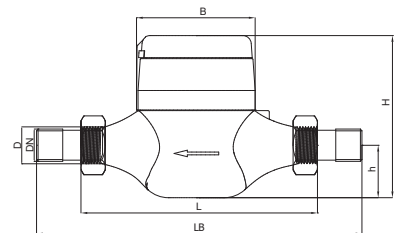
PERFORMANCE DATA

Overload Flowrate	Q4	m ³ /h	3.125
Permanent Flowrate	Q3	m ³ /h	2.500
Transitional Flowrate	Q2	m ³ /h	0.008
Minimum Flowrate	Q1	m ³ /h	0.005
Q3/Q1 (MI-001 OIML R49)	-		≤500
Maximum Registration Capacity	m ³		9999 / 99999 / 99999,99 / 99999,999
Mounting on the network	-		All Positions
Initial Flow	Qi	l/h	1
Maximum Working Pressure	bar		16
Maximum Working Temperature	°C		50
Pressure Loss	bar		0,63
Smallest Reading Resolution	m ³		0.00005
Class	-		Class 1 / Class 2



DIMENSIONS

	DN	15	15	15	20	20	mm			
Nominal diameter	DN	15	15	15	20	20	mm			
Connecting diameter	D	G 3/4	G 3/4	G 3/4	G 1	G 1	B			
Total overall meter height	H	116,6	116,6	116,6	116,6	116,6	mm			
Axis height	h	37,5	37,5	37,5	37,5	37,5	mm			
Width	B	80	80	80	80	80	mm			
Length	L	110	115	165	170	190	110	115	190	mm
Length with connections	LB	190	195	245	250	270	190	195	270	mm
Unit weight		0.93	1.05	1.09	0.95	1.16	kg			
Package Weight (without connect)		10.09	10.86	11.79	10.29	12.41	kg			
Package Weight (with connect)		11.69	12.46	13.39	12.19	14.31	kg			
Quantity per package		10	10	10	10	10	pcs			
Package dimensions		27x49x16	27x48x20	27x48x20	27x49x16	27x52x22	cm			



"Due to continuous development of our products, we reserve the right to modify our product design or construction without prior notice."